



**Manual Appendix for
AT10*..MS/MS2/MSX**

Rev 1

Page 1 of 3



**Pressure and Differential Pressure switches,
gauges and transmitters, COMHAS Series
AT-10*.. -MS/MS2/MSX**

Manual appendix

Revision: 1

Date: 22/04/2022

Prepared: F.Meyer

Approved: R.Hassan

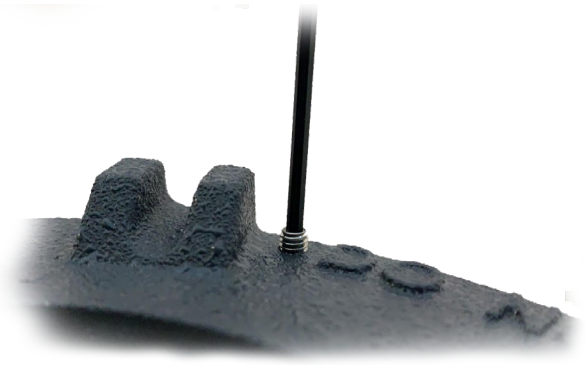


OPENING OF THE CASE

If you need to open the case, please make sure as per PIC.1 to unscrew the locking screw.

- MAKE SURE YOU ARE IN SAFE AREA OR AUTHORIZED BY ATEX PEOPLE.

Once locking screw is off, you can turn the cover to open the case.



PIC.1



THREADED LOCKING RING

Turn anti clockwise the threaded locking ring using a screw driver as per PIC.2

PIC.2





MS/MS2/MSX ALUMINUM BEZEL

Once the locking ring is off, you can easily remove the aluminum bezel (PIC.3) and access MS or MS2 to do the wiring, and then follow MS or MS2 enclosed manuals for wiring.



PIC.3

To close the unit, simply follow same instructions backwards.