



SERIES TE | DUCT AND IMMERSION BUILDING AUTOMATION TEMPERATURE SENSORS



BENEFITS/FEATURES

- Easy to mount external tab housing and flange options for duct applications
- 1/4 turn housing cover with chain to prevent dropping
- Multiple conduit knockouts for easy installation positioning
- 8' plenum rated cable option
- Terminal connector eliminates need for wire nuts

APPLICATIONS

- Building automation
- VAV temperature sensing
- Chiller or boiler loops
- AHU monitoring

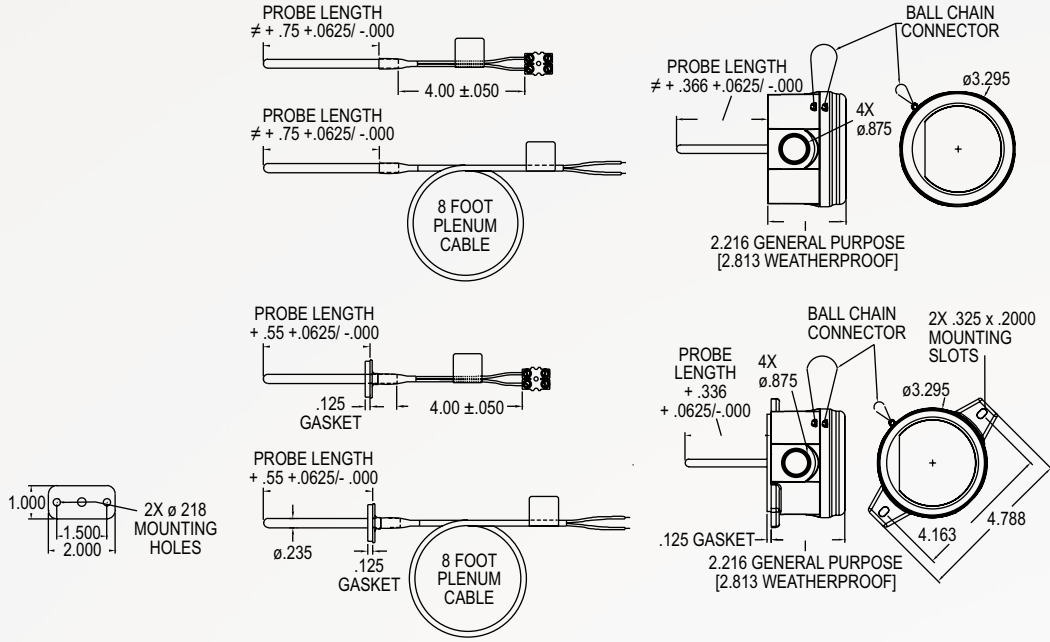
DESCRIPTION

The **Series TE Duct and Immersion Building Automation Temperature Sensors** can be used to monitor air or water temperature throughout a building management system or an air handler unit. Duct or immersion options available with or without an enclosure.

SPECIFICATIONS

Accuracy	Thermistor temperature sensor: $\pm 0.22^{\circ}\text{C}$ @ 25°C ($\pm 0.4^{\circ}\text{F}$ @ 77°F); RTD temperature sensor: DIN class A: $\pm 0.15^{\circ}\text{C}$ @ 0°C ($\pm 0.28^{\circ}\text{F}$ @ 32°F).
Temperature Limits	Operating: -40 to 302°F (-40 to 150°C).
Sensor Curves	See website for Resistance vs. Temperature Table.
Cable Rating	Plenum option includes UL listed plenum cable.
Housing Material	Meets UL 94 V-0, polycarbonate plastic.
Housing Rating	NEMA 4X (IP66) (DFW, IBW only).
Weight	5.3 oz (150.3 g).
Compliance	Meets the technical requirements of EU Directive 2011/65/EU (RoHS II).

DIMENSIONS



HOW TO ORDER

Use the **bold** characters from the chart below to construct a product code.

TE	-DFG	-A	04	4	8	-12
<p>SERIES</p> <p>TE: Duct and immersion building automation temperature sensors</p> <p>MOUNTING CONFIGURATION</p> <p>-DFG: Duct mount probe in general purpose housing</p> <p>-DFN: Duct mount probe only</p> <p>-DFW: Duct mount probe in NEMA 4X housing</p> <p>-IBG: Immersion probe in general purpose housing</p> <p>-IBN: Immersion probe only</p> <p>-IBW: Immersion probe in NEMA 4X housing</p> <p>SENSOR TYPE</p> <p>-A: 10k Ω type III thermistor</p> <p>-B: 10k Ω type II thermistor</p> <p>-C: 3k Ω thermistor</p> <p>-D: Pt100 Ω RTD</p> <p>-E: Pt1000 Ω RTD</p> <p>-F: 20k Ω thermistor</p> <p>-Q: 10k Ω type III with 11k Ω shunt</p>	<p>FITTINGS</p> <p>-00: None (Integral)</p> <p>-12: 1/2" NPT compression fitting</p> <p>-14: 1/4" NPT compression fitting</p> <p>TERMINATION</p> <p>1: 4" flying leads with female connector Molex recept</p> <p>2: 4" flying leads with male connector Mate-N-Loc plug</p> <p>3: 4" flying leads spade terminals</p> <p>4: 4" flying leads terminal block</p> <p>5: 8' plenum cable with female connector Molex recept</p> <p>6: 8' plenum cable with male connector Mate-N-Loc plug</p> <p>7: 8' plenum cable spade terminals</p> <p>8: 8' plenum cable</p> <p>PROBE DIAMETER</p> <p>4: 1/4" double encapsulated</p> <p>PROBE LENGTH</p> <p>04: 4"</p> <p>06: 6"</p> <p>08: 8"</p> <p>12: 12"</p> <p>18: 18"</p> <p>25: 2.5"</p>					

ORDER ONLINE TODAY!

dwyer-inst.com



DWYER INSTRUMENTS, LLC

©Copyright 2022 Dwyer Instruments, LLC
Printed in U.S.A. 12/22

DS-TE

Important Notice: Dwyer Instruments, LLC reserves the right to make changes to or discontinue any product or service identified in this publication without notice. Dwyer advises its customers to obtain the latest version of the relevant information to verify, before placing any orders, that the information being relied upon is current.