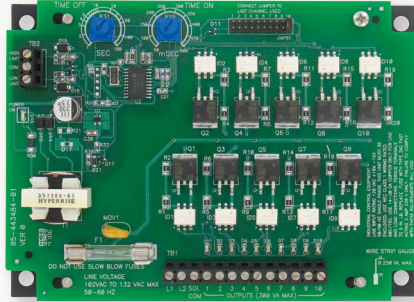




## SERIES DCT500ADC | LOW COST TIMER CONTROLLER



### BENEFITS/FEATURES

- Easy to mount panel versions reducing installation time
- Built in wire strip gauge for ease of installation
- Optional weather proof housing for harsh environments

### APPLICATIONS

- Dust collection
- Pneumatic conveying
- Cement batch plants

### DESCRIPTION

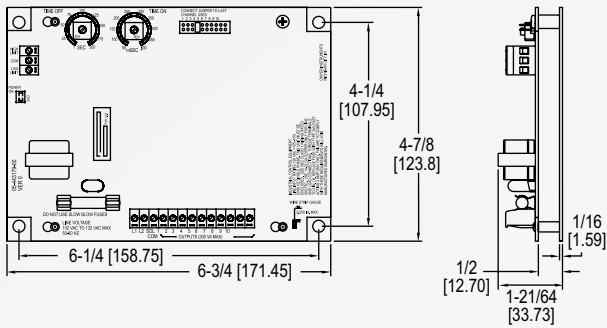
The **Series DCT500ADC Low Cost Timer Controller** is designed to provide continuous or on-demand cleaning for receivers and pulse jet systems. It is available in either 4, 6, or 10 channels, and each unit is the same size, minimizing enclosure space and reducing overall system installation cost. For added safety, the control circuitry including the control inputs are isolated from the line voltage.

### SPECIFICATIONS\*

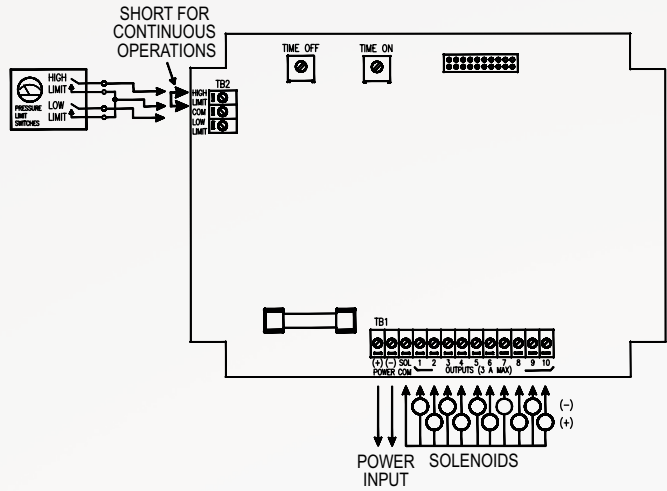
<b>Output Channels</b>	4, 6, and 10 channels.
<b>Power Requirements</b>	10-35 VDC.
<b>Power Consumption</b>	0.6 W.
<b>Solenoid Supply</b>	3 A max. per channel.
<b>Fuse</b>	Type 3 AG, 3 A @ 250 VAC.
<b>Temperature Limits</b>	-40 to 140°F (-40 to 60°C).
<b>Storage Temperature Limits</b>	-40 to 176°F (-40 to 80°C).
<b>On Time</b>	50 ms to 500 ms.
<b>On Time Accuracy</b>	±10 ms.
<b>On Time Stability</b>	±1 ms.
<b>Off Time</b>	1 s to 180 s.
<b>Off Time Accuracy</b>	±5% of setting.
<b>Weight</b>	9 oz (255 g).
<b>Agency Approvals</b>	CE.

\*Additional specifications on IOM.

## DIMENSIONS



## WIRING DIAGRAM



## HOW TO ORDER

Use the **bold** characters from the chart below to construct a product code.

<p><b>SERIES</b></p> <p><b>DCT5:</b> Low cost timer controller</p> <p><b>NUMBER OF CHANNELS</b></p> <p><b>04ADC:</b> 4 channels</p> <p><b>06ADC:</b> 6 channels</p> <p><b>10ADC:</b> 10 channels</p>	<p><b>DCT5</b>   <b>04ADC</b>   <b>-WP</b></p>	<p><b>OPTIONS</b></p> <ul style="list-style-type: none"> <li>-COC: Certificate of conformance</li> <li>-COO: Certificate of U.S. origin</li> <li>-H: Horizontal mounting</li> <li>-L: Large base plate</li> <li>-R: Random off feature</li> <li>-WP: Weatherproof housing</li> <li>-SC: Stop on clean</li> <li>-TO: 10 second time on</li> </ul>
--	--	--

**ORDER ONLINE TODAY!**  
[dwyer-inst.com](http://dwyer-inst.com)



**DWYER INSTRUMENTS, LLC**