

laboratory pressure gauges class 0,1% DS 10" (250mm)



These instruments have been designed for use in laboratories, as instrument testing or in recalibration facilities or in applications where accuracy and repeatability are paramount. They should be employed with gas or fluid process media which do not attack copper alloy, do not cristalize and do not have high viscosity. The calibration certificate issued by a laboratory officially recognized by ACCREDIA (Ex S.I.T. - Italian Calibration Service) is available upon request.

1.27.1 - Standard Model

Design: EN837-1.

Safety designation: S1 as per EN 837-2.

Accuracy class:

0,1 as per EN837-1, for ranges ≤ 8700 psi (600 bar);

0,25 as per EN837-1, for ranges > 8700 psi (600 bar).

Ambient temperature: $+50...+140^{\circ}\text{F}$ ($+10...+60^{\circ}\text{C}$).

Process fluid temepature: 68°F ($+20^{\circ}\text{C}$).

Calibration temperature: 68°F ($+20^{\circ}\text{C}$).

Thermal drift: $\pm 0,04\%$ /10 K of range (starting from $68^{\circ}\text{F} - 20^{\circ}\text{C}$).

Working pressure: max 75% of FSV

Overpressure limit: not suitable.

Protection degree: IP 44 as per EN 60529/IEC 529.

Socket material: AISI 316L st.st.

Bourdon tube: beryllium copper alloy.

Case: aluminium black painted.

Ring: aluminium black painted.

Window: plastic.

Movement: high precision.

Dial: aluminium, green with black markings and anti-parallax mirror band.

Scale amplitude: 310° .

Zero calibration: external, manual.

Pointer: balanced, knife-edge micrometer.

PRESSURE GAUGES

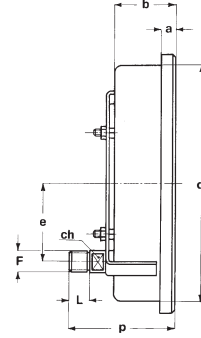
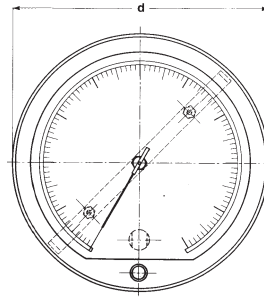
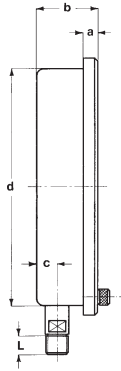
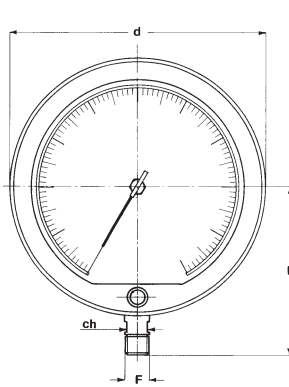
RANGES	Minor graduation	Figure interval	bar	kPa	MPa	PSI	bar ext.* kg/cm ² psi int.
0...1	0,002	0,05	◆		◆		
0...1,6	0,005	0,1	◆		◆		
0...2,5	0,005	0,1	◆		◆		◆
0...4	0,01	0,2	◆		◆		◆
0...6	0,02	0,5	◆		◆		◆
0...10	0,02	1	◆		◆		◆
0...16	0,05	1	◆		◆	◆	◆
0...25	0,05	0,5	◆		◆	◆	◆
0...40	0,1	2	◆		◆	◆	◆
0...60	0,2	5	◆		◆	◆	◆
0...100	0,2	5	◆	◆	◆	◆	◆
0...160	0,5	10	◆	◆	◆	◆	◆
0...250	0,5	10	◆	◆		◆	◆
0...400	1	20	◆	◆		◆	◆
0...600	2	50	◆	◆		◆	◆
0...1000	2	50	◆	◆		◆	◆
0...1600	5	100	◆	◆		◆	◆

* accuracy refers to the outer scale.

VACUUM

RANGES	Figure interval	Minor graduation	bar ext.* mm Hg inch Hg int.
-1÷0	0,002	0,02	F

* accuracy refers to the outer scale.



A - LOWER CONNECTION

**B - U" CLAMP,
for back connection
flush mounting**

Mounting	F	a	b	c	d	d ₁	e	h	L	ch	p	Weight
Lower	41M - G 1/2 A	0.59"	2.44"	0.76"	10.62"	9.72"		6.69"	0.78"	0.66"		6.83 lbs
	43M - 1/2-14 NPT	(15)	(63)	(19,5)	(270)	(247)		(170)	(20)	(17)		(3,1 kg)
Back	41M - G 1/2 A	0.59"	2.44"		10.62"	9.72"	3.14"		0.78"	0.66"	3,72"	1.47 lbs
	43M - 1/2-14 NPT	(15)	(63)		(270)	(247)	(80)		(20)	(17)	(111,5)	(3,25 kg)

dimensions : inches (mm)

OPTIONS

B - "U" Clamp (1)
CE1 - ACCREDIA certificate (pressure gauges)
CE3 - ACCREDIA certificate (vacuum gauges)
K02 - Accuracy class 0,25% as per EN837-1, for ranges ≤ 600 bar

(1) to be ordered for mounting cod. "D"

"HOW TO ORDER" SEQUENCE

Section / Model / Case / Mounting / Diameter / Range / Process connection / Options

1 27 1 A I 41M B...K02
D 43M