

bourdon tube test gauges
all stainless steel construction, "solid-front"
class 0,25%
DS 6" (150mm)



These instruments have been designed for laboratories, instrument testing or recalibration facilities and to be used in other applications where accuracy and repeatability are of primary importance. They are provided with a solid separating wall in stainless steel, placed between the dial and the elastic element and with a blow out back that is released from the case whenever a pressure is created inside the case because of leaks or accidental damage of the elastic element. The process fluids should be gases or liquids, they must not have high viscosity and must not cristalize. They can be employed in the worst working conditions determined by aggressive medium and environment thanks to the wetted parts in AISI 316L. The calibration certificate issued by a laboratory officially recognized by ACCREDIA (Ex S.I.T. - Italian Calibration Service) is available upon request.

1.25.1 - Standard Model

Design: EN 837-1.

Safety designation: S3 as per EN 837-2.

Accuracy class: 0,25 as per EN 837-1.

Ambient temperature: -4...+149 °F (-20...+65 °C).

Process fluid temperature: +149°F (max +65 °C.)

Calibration temperature: 68°F (+20 °C).

Thermal drift: ±0,4 %/10 K of range (starting from 68°F - 20°C).

Working pressure: max 75% of FSV

Overpressure limit:

25% of FSV for ranges up to 1450 psi (100 bar);

15% of FSV for ranges over 1450 psi (100 bar).

Protection degree: IP 55 as per IEC 529.

Socket material: AISI 316L st.st.

Bourdon tube: AISI 316L st.st. seamless tube.

Case: stainless steel.

Ring: stainless steel, bayonet lock.

Blow out disk: stainless steel.

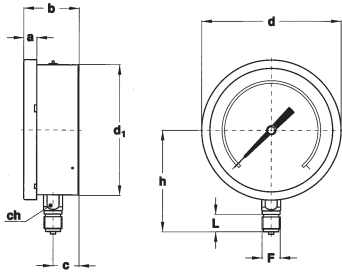
Window: safety glass.

Movement: high precision, horology alloy.

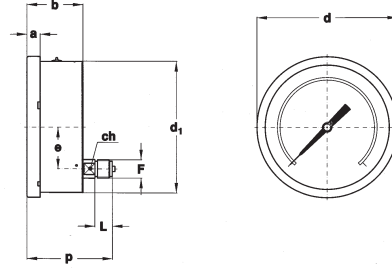
Dial: aluminium, white with black markings and anti-parallax mirror band.

Pointer: adjustable, aluminium, black, knife-edge micrometer.

RANGE	Minor graduation	Figure interval	bar	kPa	MPa	psi
0...1	0,005	0,1	◆		◆	
0...1,6	0,005	0,1	◆		◆	
0...2,5	0,01	0,1	◆		◆	
0...4	0,02	0,2	◆		◆	
0...6	0,02	0,5	◆		◆	
0...10	0,05	1	◆		◆	
0...16	0,05	1	◆		◆	
0...25	0,1	1	◆		◆	
0...30	0,1	2	◆		◆	◆
0...40	0,2	2	◆		◆	
0...60	0,2	5	◆			◆
0...100	0,5	10	◆	◆		◆
0...160	0,5	10	◆	◆		◆



A - LOWER CONNECTION



D - BACK CONNECTION

Mounting	F	a	b	c	d	d ₁	e	h	p	L	ch	Weight
Lower	41M G 1/2 A	0.59" (15)	2.51" (64)	1.14" (29)	6.33" (161)	5.92" (150,5)		4.60" (117)		0.78" (20)	0.86" (22)	2.62 lbs (1,19 kg)
Back	43M 1/2-14 NPT	0.59" (15)	2.51" (64)		6.33" (161)	5.92" (150,5)	1.88" (47,8)		3.83" (97,5)	0.78" (20)	0.66" (17)	2.42 lbs (1,10 kg)

dimensions : inches (mm)

PRESSURE GAUGE HOLDER CASE



Instruments with radial connection can be supplied of pressure gauge holder case, code **5VAL**.

OPTIONS

C -	Back flange, for lower connection pressure gauges
CE1 -	ACCREDIA certificate (pressure gauges)
P02 -	Oxygen service

"HOW TO ORDER" SEQUENCE

Section / Model / Case / Mounting / Diameter / Range / Process connection / Options
1 25 1 A G 41M C
D 43M CE1...P02